

# COMPANY PROFILE

+971 5555 12130

[www.almadinacorporate.com](http://www.almadinacorporate.com)

Al Qusais 2, Dubai

# TABLE OF CONTENT

01. Company Overview

02. Company Values

03. Our Process

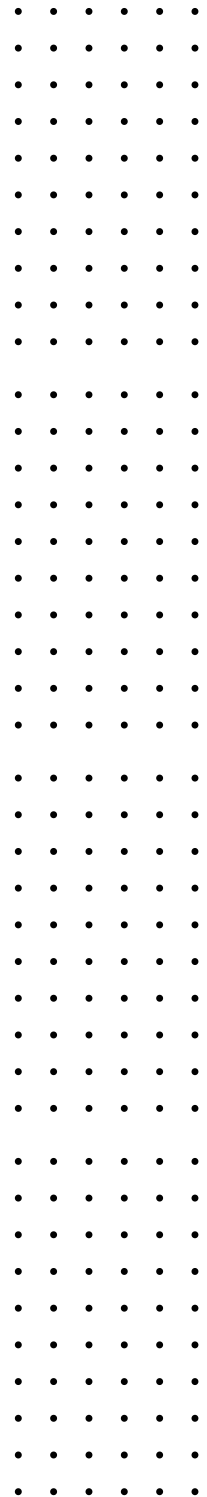
04. List of Categories

05. Company Chart

06. Business Overview

07. Our Clients

08. Contact us





**SHABEER.K**

**FOUNDER & C.E.O**

We specialize in swiftly and efficiently identifying the ideal permanent or interim staff. Our team oversees the entire recruitment process, encompassing job descriptions, contract negotiations, and onboarding checklists. With extensive industry knowledge, our experienced professionals are adept at pinpointing candidates who align precisely with client needs. We emphasize the significance of selecting the right individual, allowing clients to concentrate on maximizing their business potential while we manage the recruitment process.

# COMPANY VALUES

---

We will work in partnership with you, getting to understand you, your team and your business- think of AL MADINA as your own internal recruitment team. With a vast amount of recruitment experience within the team, we have experience of recruiting across multiple sectors, at all levels, up to and including Director level posts. This includes Administration, HR, Marketing, Finance, Logistics, IT, Sales, Account Management and many more.

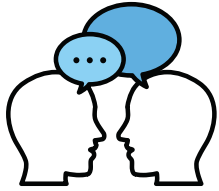


# OUR PROCESS

---

We have a dedicated Recruitment Team, allowing us to respond to your recruitment needs in the timeliest manner possible. Our honest and pragmatic approach ensures that we deliver a seamless service.

We provide a full end to end service including follow-ups and the opportunity to retain our services because we truly understand the challenges and pressures of navigating recruitment as a business owner.



## CONSULTATION



## VACANCY ADVERTISEMENT



## INTERVIEW & HR SUPPORT



# LIST OF CATGORIES :



CIVIL WORKS



HOSPITAL



TAILORING



RESTAURANT



CLEANING



CAR MECH



A/C MECH



OFFICE BOY



PACKING



STEEL FIXING



CARPENTER



PLUMBING



ACCOUNTANT



CASHIER



PAINTER



BUTCHER



ELECTRICIAN



DRAFTSMAN



ALL WELDING



SUPERVISORS



HEAVY DRIVER



BUS DRIVER



DRIVER



BIKE RIDER

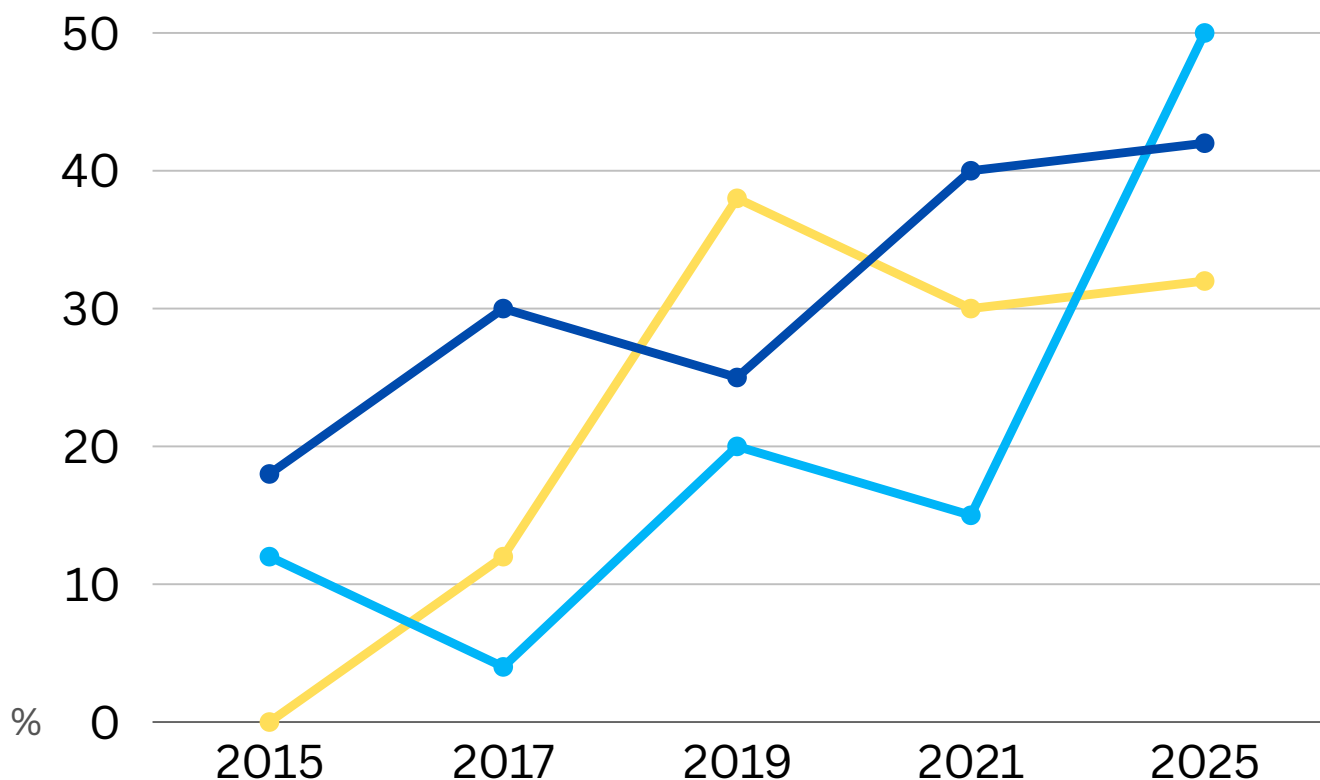


CAR WASH

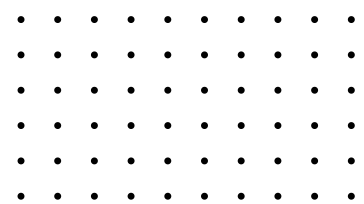
# COMPANY CHART

AL MADINA is a leading recruitment agency where we work in partnership with you to become an extension of both your business and team, to develop and deliver personalized service tailored to the needs and requirements of you and your team. Providing expert advice and guidance, we not only help you with day-to-day HR but also support you with any potential challenges you may face.

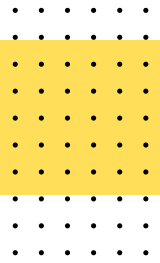
We pride ourselves on being recruitment experts; our experienced staff have recruited across many industries and at all levels: in-house and agency. We have matched thousands of employees with their perfect jobs in companies across the world.



- Number of satisfied clients.
- Number of projects we did.
- Number of happy customers.

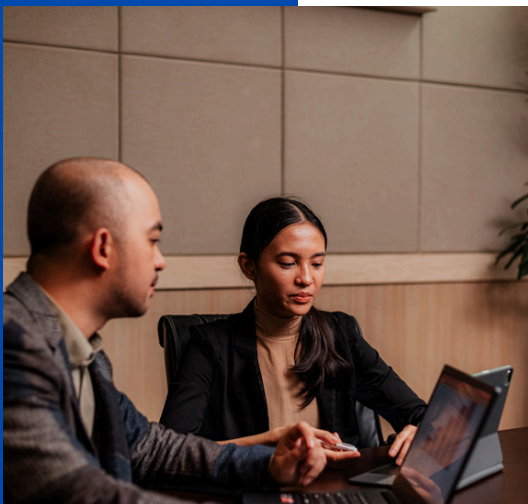


# BUSINESS OVERVIEW



## Our Mission

Whether you are looking for permanent or interim staff, We will help you find the right person quickly and efficiently, managing the end-to-end process from job description creation.



## Partners

We strive for on each client's individual requirements and delivering effective, tailor-made solutions. We will provide a committed and through service, take nothing for granted and be rigorous in our efforts to deliver the highest quality results.



## Our Values

We search and selection's mission is to make a significant commercial contribution to our client's successes through delivery of imaginative, creative and effective consultancy solution.

# OUR CLIENTS

We strive to provide our clients and candidates with services which meet and exceed their expectations. We are committed to continuous improvement and have established a Quality Management System.

It includes regular internal audits, performance reviews, and mechanisms for client and candidate feedback. This allows us to proactively identify areas for growth, adapt to evolving market needs, and continually refine our services to deliver optimal outcomes for everyone we partner with.





+971 5555 12130  
+971 5858 56884



info@almadinacorporate.com



www.almadinacorporate.com



Al Qusais 2, Dubai - UAE

